



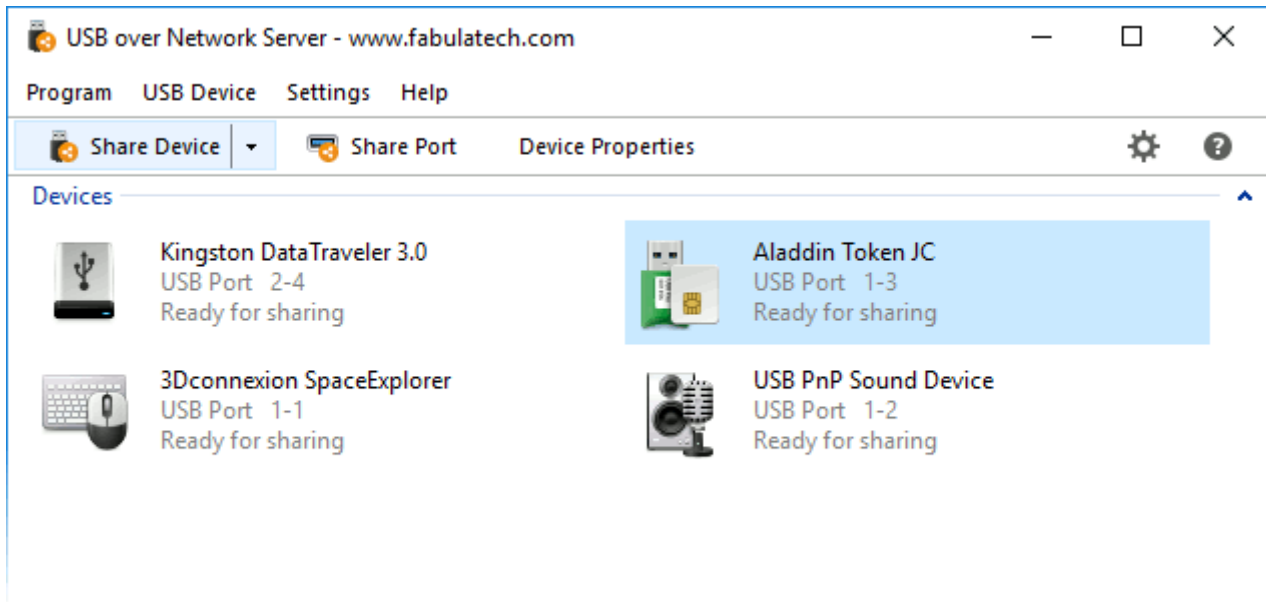
FabulaTech Products

Advanced Communications Solutions

USB over Network
USB for Remote Desktop
Scanner for Remote Desktop
Webcam for Remote Desktop
Biometrics for Remote Desktop
Serial Port for Remote Desktop
Printer for Remote Desktop
Sound for Remote Desktop
Serial Port Redirector
Serial Port Splitter
Virtual Serial Port Kit
Network Serial Port Kit
Virtual Modem
Serial Port Mapper
Virtual Serial Port Control
Serial Port Control
USB Monitor Pro

USB over Network

Share and access your USB devices over local network or Internet.



Brief Overview

USB over Network is a user-friendly application that enables you to access USB devices over LAN or the Internet.

The program allows working with remote USB devices over a regular TCP/IP connection. It provides you with easy and reliable way to share or get remote access to USB devices. As soon as you install USB over Network Server you will be able to share USB devices over any network. When you connect the remotely shared USB devices to the computer with USB over Network Client installed, they are recognized by operating system as if they were attached directly to it.

Goals

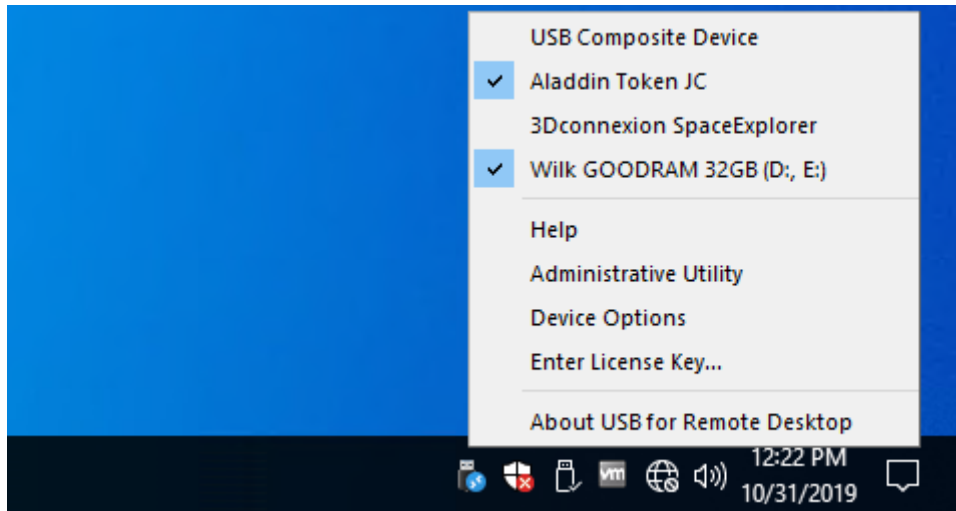
- Real USB virtualization technology
- Supports a wide range of USB devices
- USB port Sharing.

Quick Specs

- Supported OS: Windows, Linux, macOS
- Latest Version: 6.0.6

USB for Remote Desktop

Access local USB devices in remote desktop session.



Brief Overview

USB for Remote Desktop is an application for redirecting USB devices to your remote session. It redirects any USB devices to remote desktop environments over Microsoft RDP, Citrix ICA, Amazon NICE DCV, VMware Blast and Teradici PCoIP protocols. The remote server handles redirected USB peripherals as if they were directly plugged into the remote side.

The program consists of Server and Workstation parts. The Workstation part should be installed on the local workstation and the Server part goes to the remote server you are connecting to.

USB for Remote Desktop Server makes redirected USB devices available for logged in user. To connect the required device simply click on the USB for Remote Desktop icon in the tray context menu in your remote session and select the device from the list.

Goals

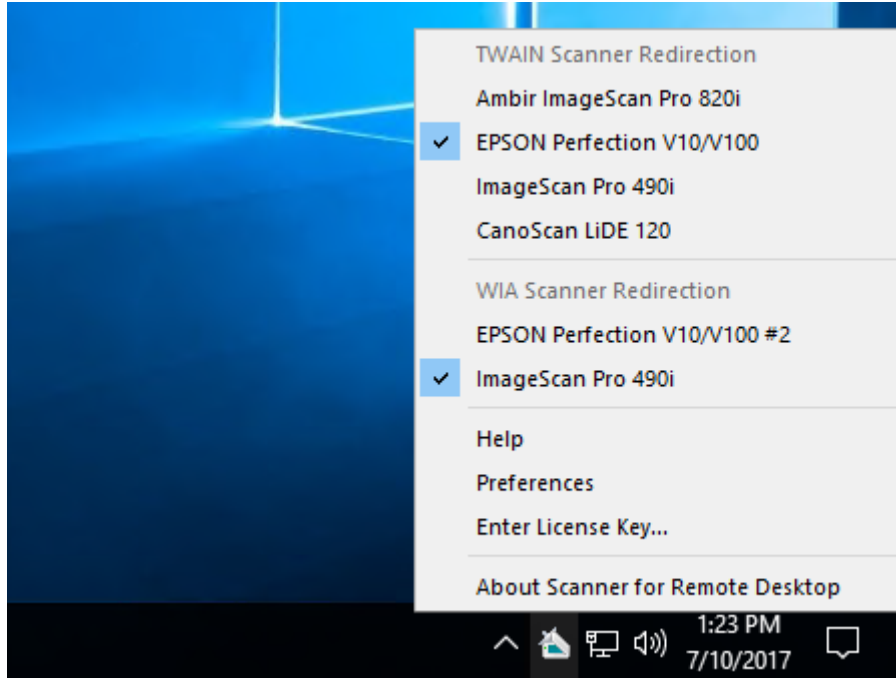
- 100% Software solution
- Compatible with all types of USB devices
- USB port redirection
- Auto-redirecting of hot-plugged USB devices

Quick Specs

- Supported OS: Windows, Linux, macOS
- Latest Version: 6.2

Scanner for Remote Desktop

Use local scanners in remote Windows session.



Brief Overview

With Scanner for Remote Desktop now it's possible to scan documents within your remote desktop environment from your locally plugged scanner. It makes all local scanners accessible in remote desktop session.

The program creates a virtual scanner on the remote side. The virtual scanner is mapped to the hardware scanner plugged to your local PC, thin client or even tablet. So this makes possible to use hardware scanner from any TWAIN or WIA-compliant scanning application running in remote Microsoft RDP, Citrix ICA, Amazon NICE DCV, VMware Blast and Teradici PCoIP session.

Goals

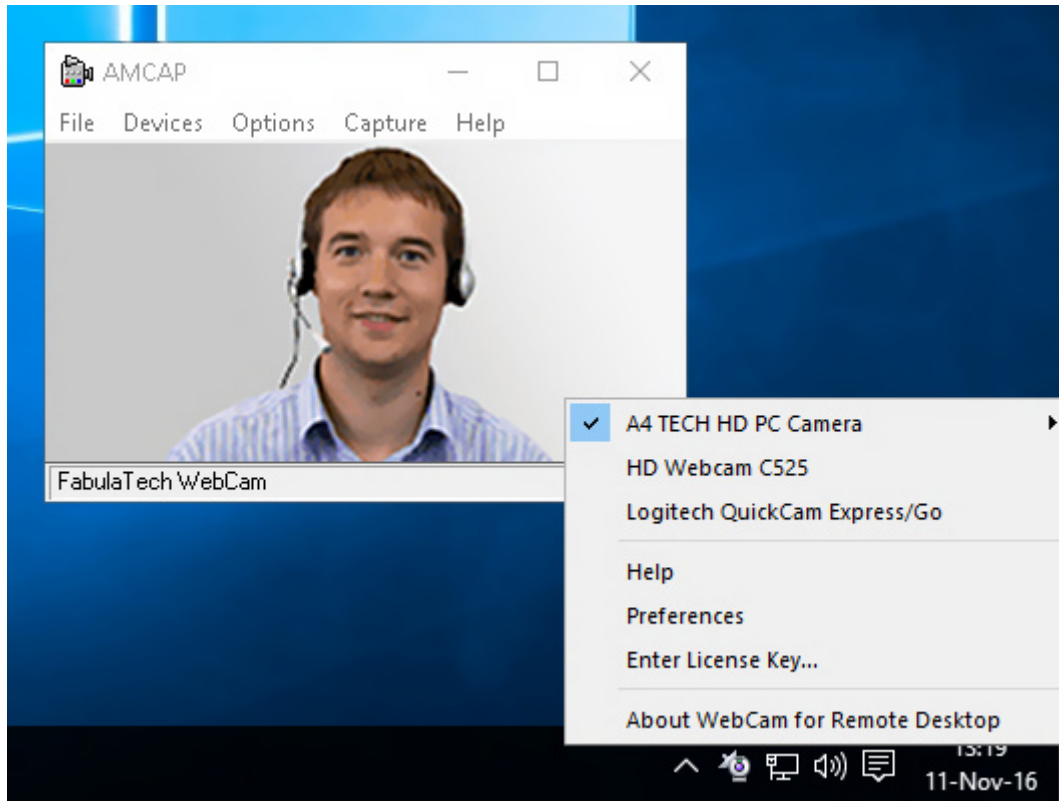
- Complete TWAIN and WIA support
- Secure and separate access
- Support for RDP, PCoIP, Blast, ICA and NICE DCV protocols
- Seamless mode support

Quick Specs

- Supported OS: Windows, Linux, macOS
- Latest Version: 3.6

Webcam for Remote Desktop

Use local webcams in remote Windows session.



Brief Overview

Webcam for Remote Desktop transfers video data from the local computer to the remote desktop session and provides you with smooth, clean and persistent video streaming with low latency.

The program creates a virtual webcam which is recognized in your remote session as a hardware one. The program works over Microsoft RDP, Citrix ICA, Amazon NICE DCV, VMware Blast and Teradici PCoIP protocols in single-user and multi-user environments.

Goals

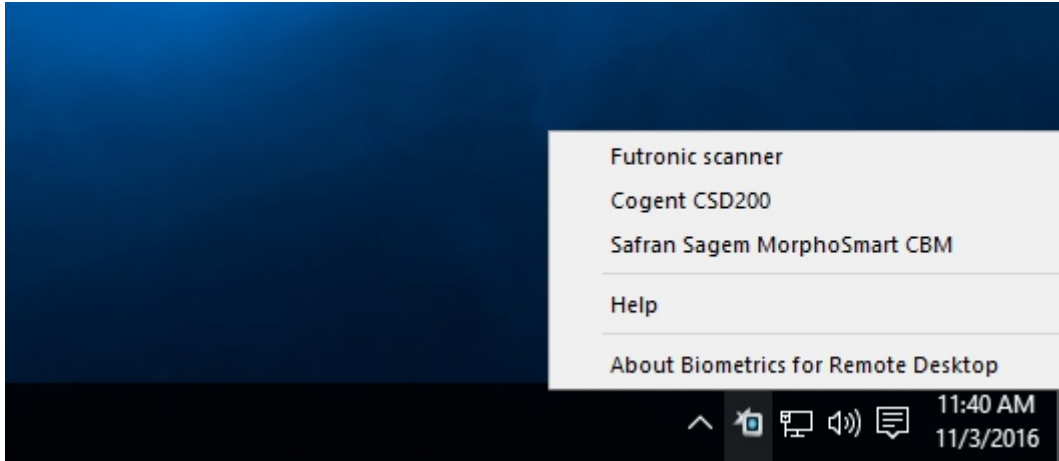
- Support for RDP, PCoIP, Blast, ICA and NICE DCV
- Secure and separate access
- Advanced data compression
- Available for Windows, Linux and macOS

Quick Specs

- Supported OS: Windows, Linux, macOS
- Latest Version: 2.8.54

Biometrics for Remote Desktop

Use local biometric devices in remote desktop session.



Brief Overview

Biometrics for Remote Desktop is a perfect solution for biometric scanner redirection to remote desktop sessions via Microsoft RDP, Citrix ICA, Amazon NICE DCV, VMware Blast and Teradici PCoIP.

Fingerprint readers are recognized by the server's operating system as if they were attached directly to it.

Goals

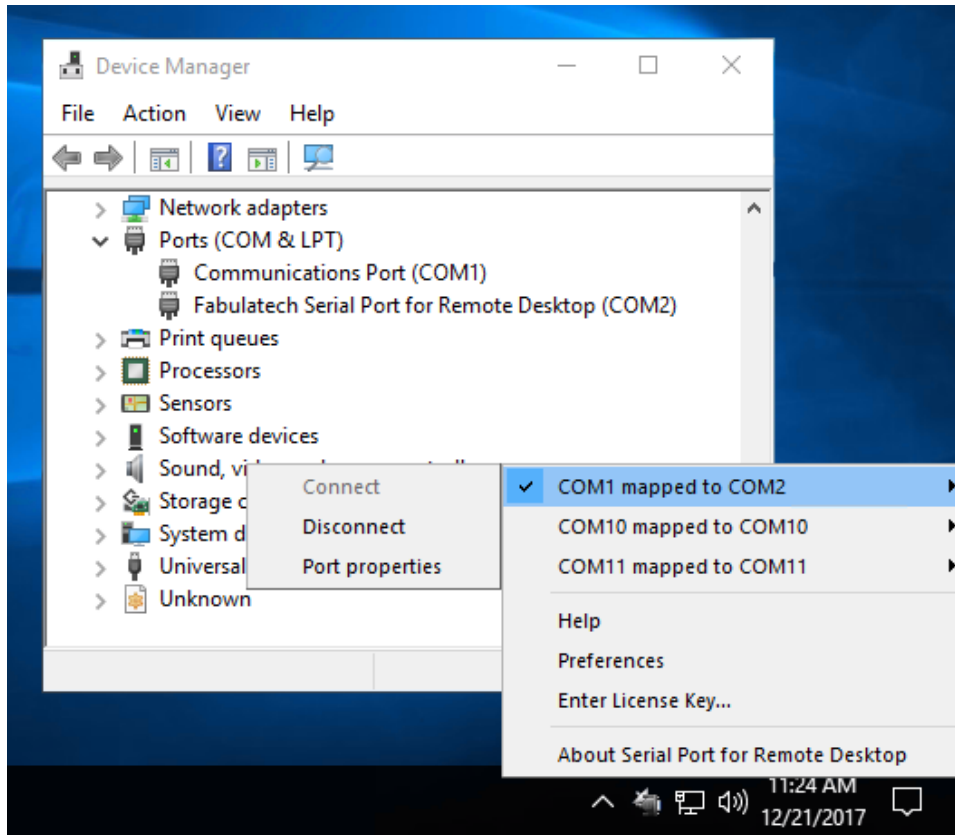
- Support various types of biometric devices
- High-quality redirection
- Multi-platform support

Quick Specs

- Supported OS: Windows, Linux
- Latest Version: 2.0.5

Serial Port for Remote Desktop

Use local serial devices in remote desktop session.



Brief Overview

Serial Port for Remote Desktop is a perfect solution for COM port redirection to remote desktop sessions via Microsoft RDP, Citrix ICA, Amazon NICE DCV, VMware Blast and Teradici PCoIP.

Serial devices are recognized by the server's operating system as if they were attached directly to it.

Goals

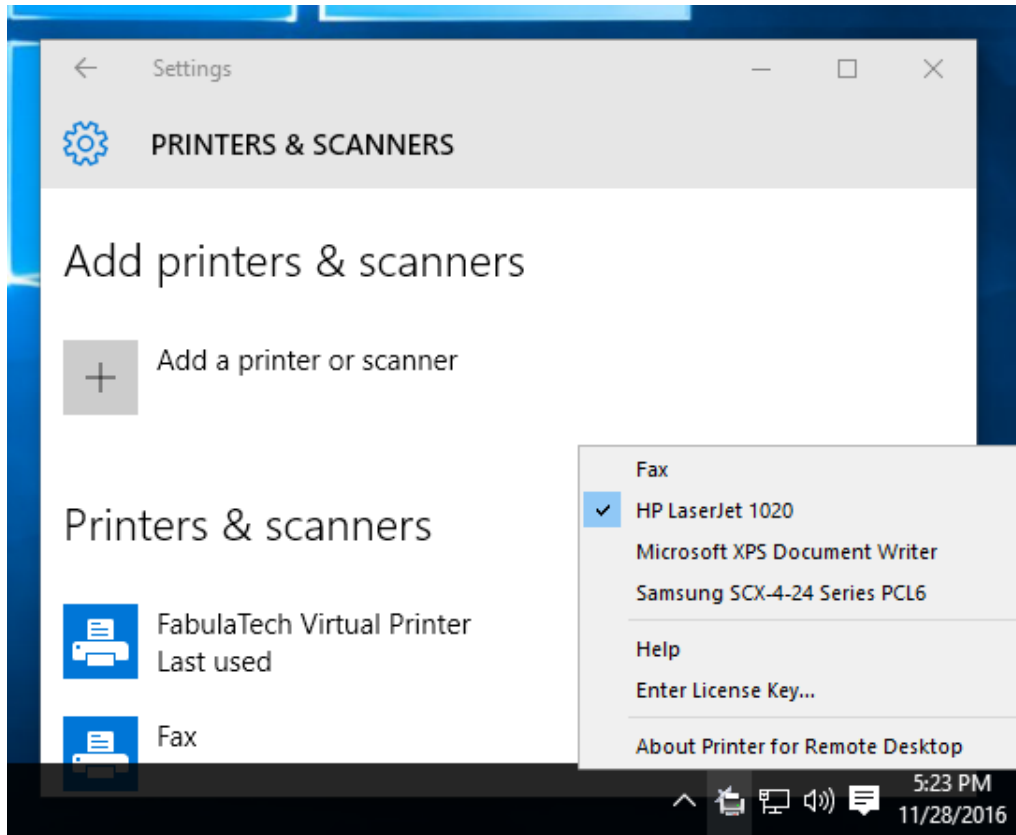
- Multi-platform support

Quick Specs

- Supported OS: Windows, Linux
- Latest Version: 5.0

Printer for Remote Desktop

Use local printers in remote Windows session.



Brief Overview

Printer for Remote Desktop is a reliable and easy-to-use solution for remote desktop printing. It allows to use your local printer in a remote desktop environment through Microsoft RDP, Citrix ICA, Amazon NICE DCV, VMware Blast and Teradici PCoIP.

The program creates a virtual printer on the remote server and maps it to the local printer as if your local printer were plugged directly to the server side. So, you can print to your local printer from the remote session or application.

Goals

- Secure and separate access
- All brands of printer compatible
- Support for RDP, PCoIP, Blast, ICA and NICE DCV protocols
- Single-user and multi-user environments

Quick Specs

- Supported OS: Windows
- Latest Version: 1.6

Sound for Remote Desktop

Use local input and output audio devices in remote desktop session.



Brief Overview

Sound for Remote Desktop is a perfect solution for providing real-time two-way sound stream for Microsoft RDP, Citrix ICA, Amazon NICE DCV, VMware Blast and Teradici PCoIP remote desktop sessions.

There are a lot of cases when native sound redirection cannot be used or does not work correctly. In such cases Sound for Remote Desktop is a perfect solution.

The product provides high-quality low-latency two-way real-time audio stream within local workstation and remote desktop session.

Goals

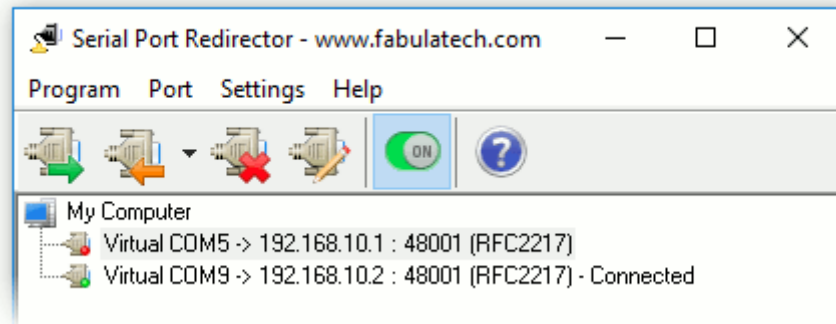
- Full DirectSound compatibility
- Support for all types of sound in or out devices
- High-quality sound transfer
- Multi-protocol support

Quick Specs

- Supported OS: Windows, Linux, macOS
- Latest Version: 4.1

Serial Port Redirector

Redirect serial data from Virtual Serial Port to TCP/IP network.



Brief Overview

Serial Port Redirector allows serial communications software to become network-ready. The program creates virtual serial ports and redirects all data to specified TCP-port of remote IP-address.

The program supports RFC2217 protocol to establish the connection with serial port servers and also allows transmitting raw format data over the network.

Goals

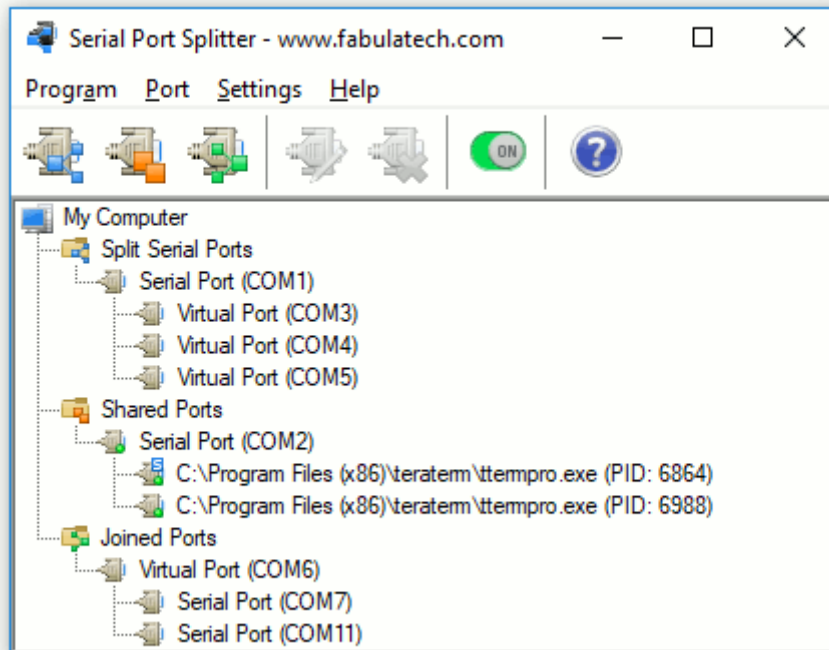
- Transparently makes serial applications network ready
- True virtual serial port driver
- Compatible with wide variety of serial servers
- Full support of Telnet RFC2217 protocol

Quick Specs

- Supported OS: Windows
- Latest Version: 3.0

Serial Port Splitter

Share dataflow of one serial port among several applications or join dataflow of several serial port devices to one application.



Brief Overview

Serial Port Splitter allows several serial communications applications to get simultaneous access to serial device plugged to a COM port.

Serial Port Splitter creates the necessary number of virtual COM ports linked to the specified physical COM port. Created virtual serial ports appear as usual hardware COM ports. When virtual serial ports are opened by communications applications correspondingly, data from the physical COM port is sent to all opened virtual COM ports simultaneously. And vice versa, data from each communications application written to a virtual COM port is sent to the physical COM port.

Goals

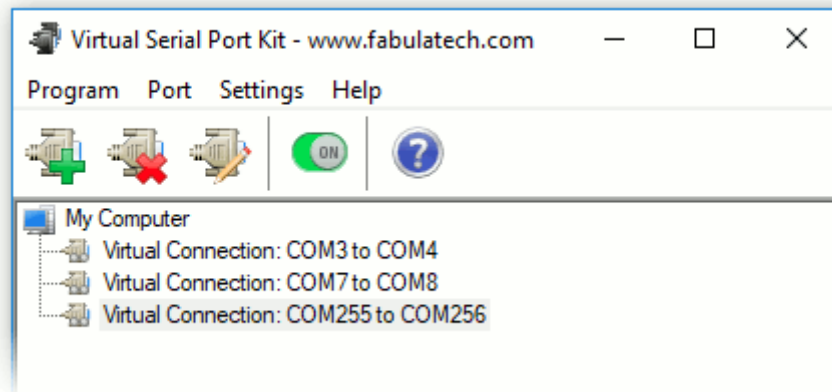
- Split COM port data between virtual serial ports
- Share serial port between several applications
- True virtual serial port driver
- Runs as system service

Quick Specs

- Supported OS: Windows
- Latest Version: 4.8

Virtual Serial Port Kit

Create virtual serial ports connected via a virtual null-modem cable.



Brief Overview

Virtual Serial Port Kit allows creating a pair of virtual serial ports connected with virtual null-modem cable. The software provides null-modem connection between two serial communications applications. Communications software interacts with each other via virtual COM-ports in the same way as via hardware COM-ports connected with null-modem cables.

All data written to one virtual COM port will be immediately read from another COM port and vice versa.

Goals

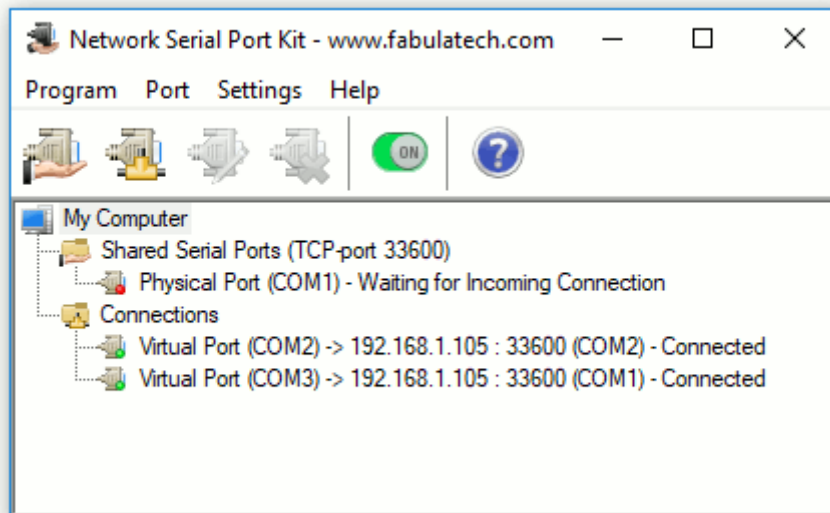
- Connect serial applications via virtual serial ports
- True virtual serial port driver
- Runs as system service

Quick Specs

- Supported OS: Windows
- Latest Version: 5.9

Network Serial Port Kit

Share and access any serial devices or create virtual null-modem cables over a TCP/IP network or the Internet.



Brief Overview

Network Serial Port Kit allows to share any serial port over TCP/IP network. It creates virtual COM port providing access to a serial device plugged to remote shared COM port.

Also it allows to emulate virtual null-modem cable over network.

Goals

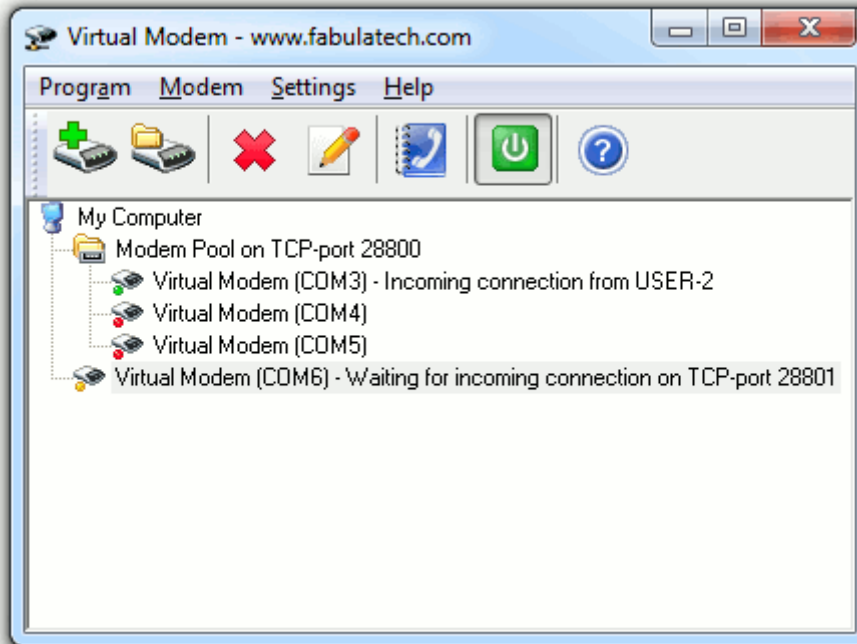
- True emulation of the remote serial port
- Auto-reconnect if network connection is broken
- Network latency compensation algorithm

Quick Specs

- Supported OS: Windows
- Latest Version: 6.2

Virtual Modem

Use virtual modems instead of hardware to connect legacy software over the Internet.



Brief Overview

Virtual Modem is a software solution that replaces a pair of hardware modems with virtual modems. It allows two modem communications applications to interact over a local network or the Internet instead of dialing a telephone number.

There is no unreliable phone connections, busy lines, call chargers or any hardware equipment. The program is an absolute replacement of the hardware solution.

Goals

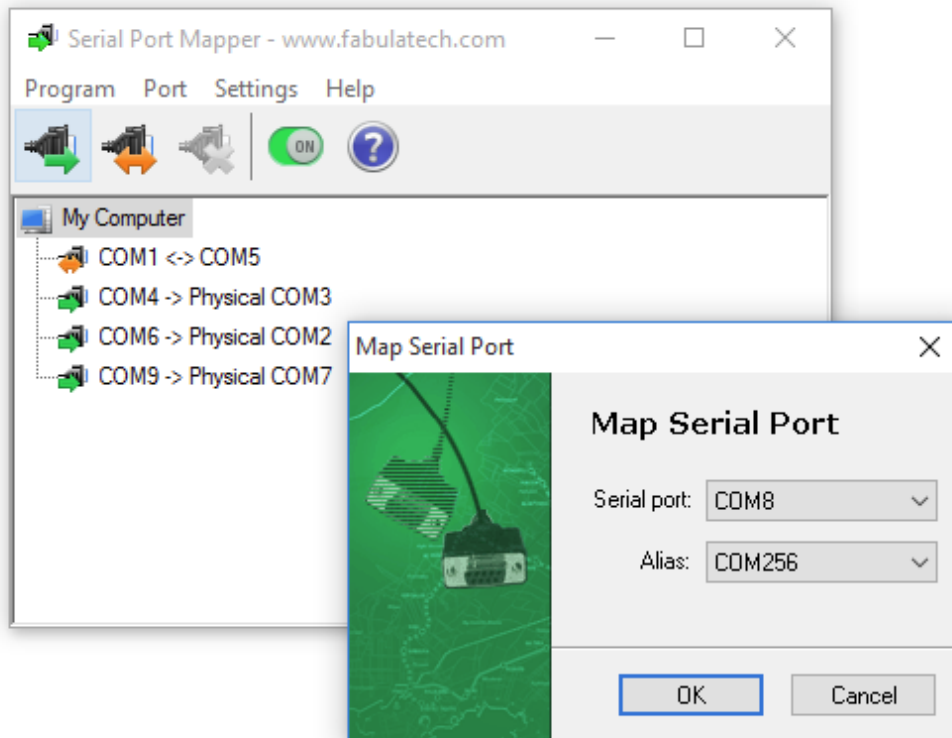
- Replace hardware modems with pure software
- No charges for phone calls
- Location-independent

Quick Specs

- Supported OS: Windows
- Latest Version: 2.2.2

Serial Port Mapper

Map serial ports to any other port names, swap existing serial ports.



Brief Overview

Serial Port Mapper is a tool that maps COM ports to any port number. The program allows legacy applications to transfer data over any serial port even if it is not accessible for the application.

If a legacy application is designed to work only over COM1-COM4 you can use Serial Port Mapper to assign the alias for available serial ports with different names.

Goals

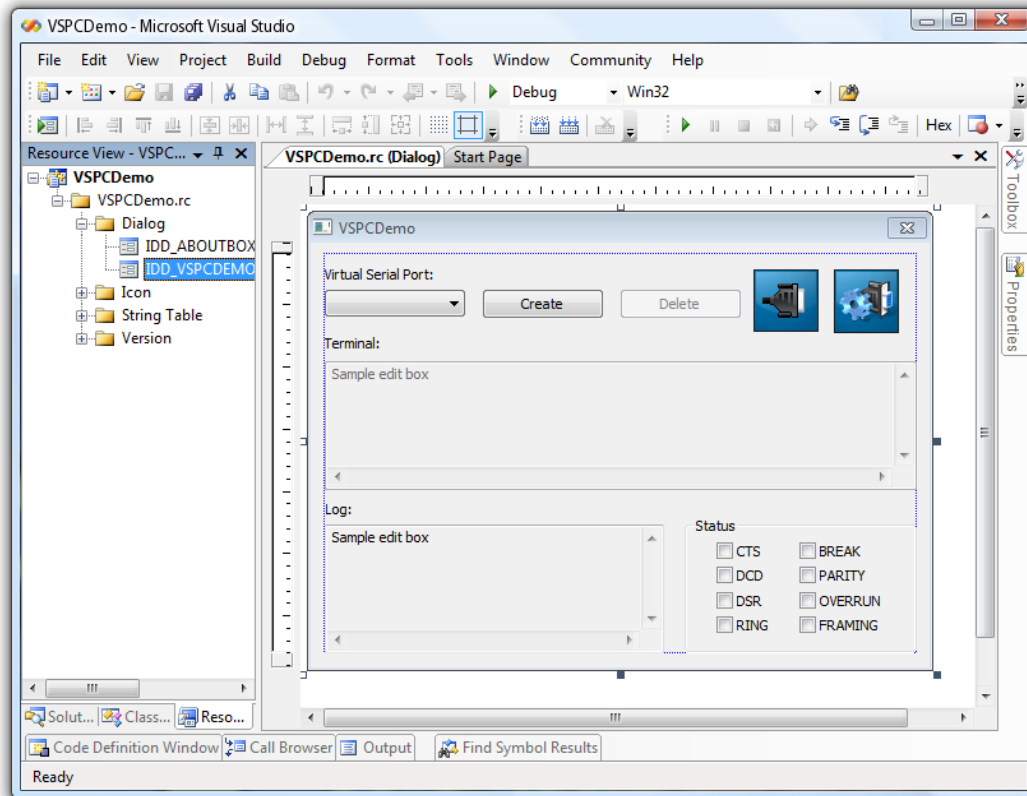
- Assign alias to any COM port
- Swap COM ports
- Port aliases look exactly as physical COM ports
- Command-line control support

Quick Specs

- Supported OS: Windows
- Latest Version: 1.5.1

Virtual Serial Port Control

Create and control virtual serial ports to which any serial communications software can connect.



Brief Overview

Virtual Serial Port Control is a developer component which makes it possible to create and control virtual serial ports. The program is accessible over ActiveX control, Net or DLL.

It entirely replaces hardware serial ports and hardware COM devices. Virtual COM ports created with Virtual Serial Port Control fully emulate hardware serial ports.

Goals

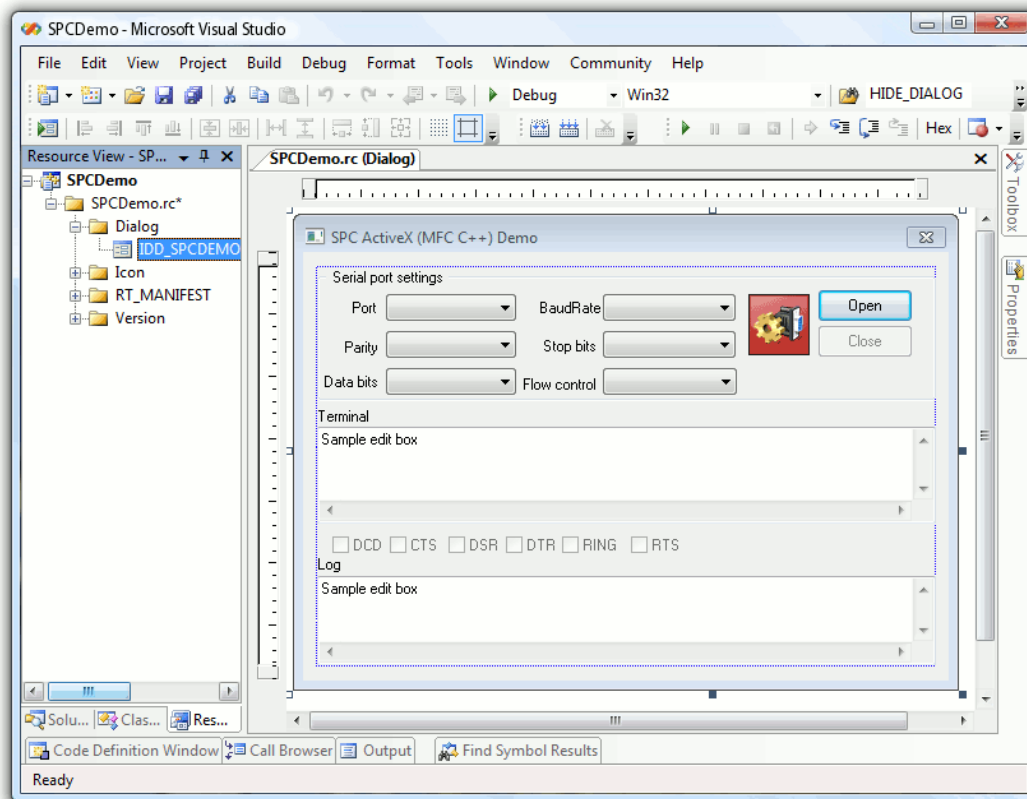
- True virtual serial port driver
- Powerful SDK
- Event driven architecture

Quick Specs

- Supported OS: Windows
- Latest Version: 3.6

Serial Port Control

Easy to use control intended for simplification serial port communication tasks in your projects.



Brief Overview

Serial Port Control is a developer component. It simplifies the process of asynchronous and multithreaded COM port communication tasks in your projects.

The program allows you to overcome the complexity of the Win32 Serial Communications API so you can write to and read from your serial ports using direct and powerful commands. Serial Port Control comes in different forms and supports wide variety of popular development environments like Microsoft Visual C++, Microsoft C#, Visual Basic, Visual Basic .Net, Delphi/C++ Builder and so on.

Goals

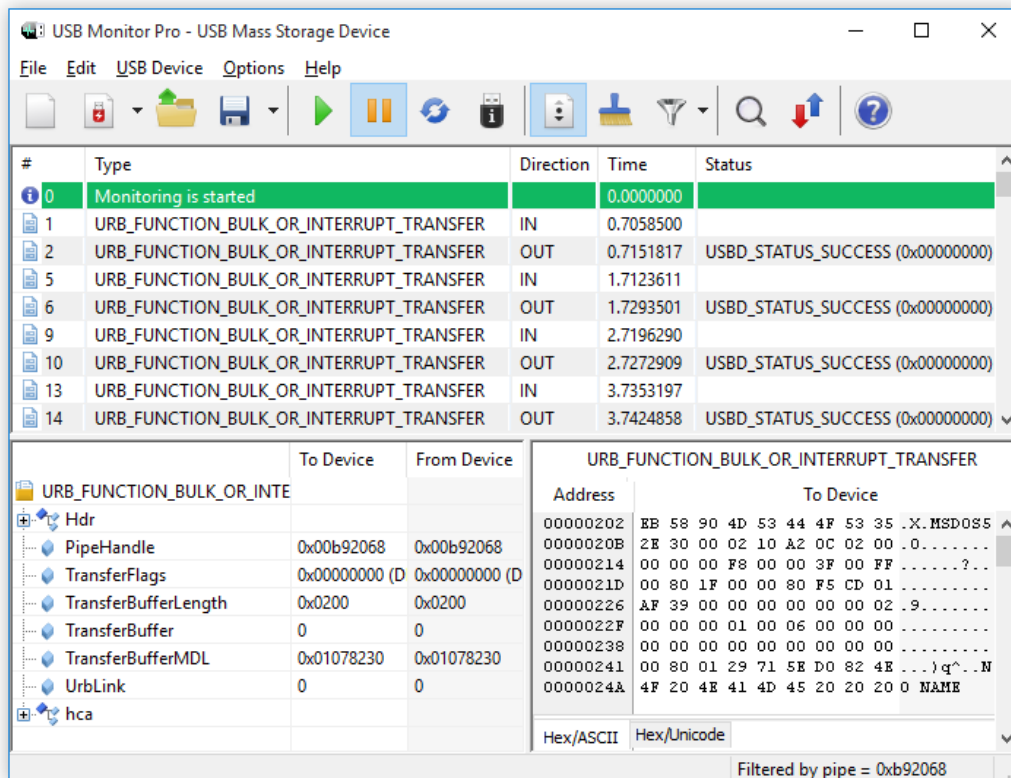
- Event driven architecture
- No programming is required
- Powerful SDK

Quick Specs

- Supported OS: Windows
- Latest Version: 2.3.4

USB Monitor Pro

USB protocol capturing, decoding, displaying, filtering, errors detecting and much more what cannot be done by others.



Brief Overview

USB Monitor Pro is a software tool that lets you monitor USB data, detect bugs and issues in the process of development of software, hardware and drivers for USB devices.

USB Monitor Pro allows monitoring incoming or outgoing data of any USB devices attached to your computer. The program is an efficient packet sniffer and traffic analyzer for Windows that makes debugging process easy and fast. USB Monitor Pro is a reliable way to decode, filter, detect errors in the USB data stream without any expensive hardware.

Goals

- 100% Software solution
- Real-time monitoring
- Built-in data filters
- Monitoring of multiple USB devices

Quick Specs

- Supported OS: Windows
- Latest Version: 2.8

About FabulaTech

Device virtualization solutions

FabulaTech is a leading software development company that specializes in providing innovative cloud and virtualization solutions. With over 20 years of experience in the industry, we have established ourselves as a trusted provider of cutting-edge device redirection software.

Wide range of products

Our flagship product USB over Network is based on FabulaTech USB device virtualization technology, which enables users to access any USB peripheral devices over a local network or the Internet. You can effortlessly connect to a diverse range of devices from any location in the world using FabulaTech solutions, without requiring costly hardware or complex setup procedures.

In addition to USB redirection, we also offer a range of optimized high-level solutions designed exclusively for use in remote desktop environments. This enables image scanners, printers, biometrics, webcams, sound devices, and other specialized peripherals to be accessed in a remote desktop session in any modern remote desktop environment, making the process of migrating to the cloud and remote desktop fast and transparent. Our products cater to a diverse range of industries, including healthcare, finance, manufacturing, and more.

Focus on customers

At FabulaTech, we prioritize providing exceptional customer service and support. Our team of experts is available to answer any questions you may have and provide assistance with installation, setup, and troubleshooting.

Whether you are a small business or a large enterprise, FabulaTech has the software solutions you need to enhance your productivity and efficiency. Contact us today to learn more about our products and how we can help you achieve your goals.

Contacts

Postal address: 124 Baker Street, London, W1U 6TY, UK

E-mail: contacts@fabulatech.com

Website: www.fabulatech.com

Phones: (9:00 am - 5:30 pm CET)

+44(0)151 324-3249

+1 (302) 250-4477